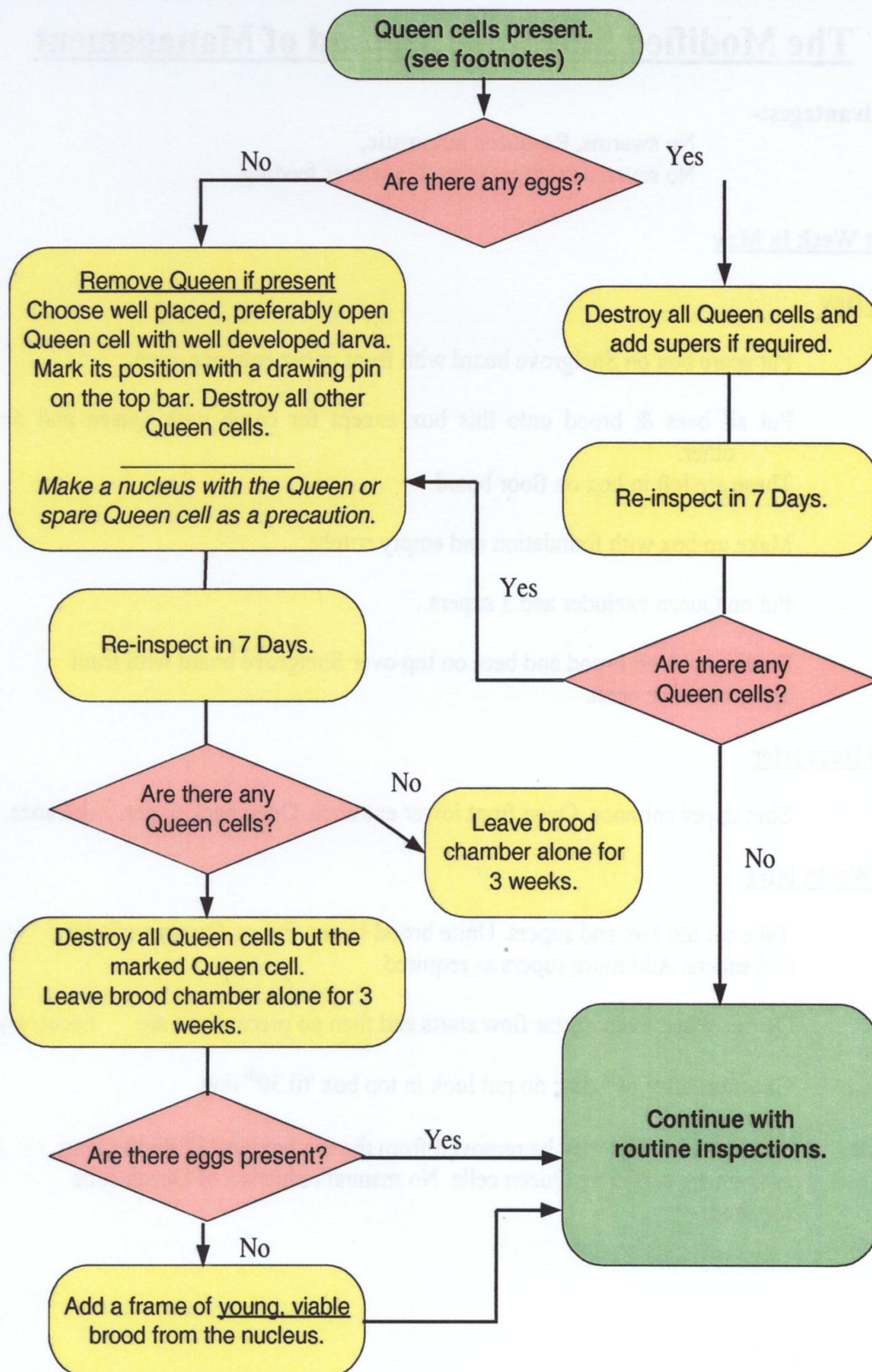


METHODS OF QUEEN INTRODUCTION

1. Pour solution over brood frames and allow Queen to walk in through the entrance.
2. Dip Queen into Royal Jelly and water solution and introduce directly.
3. Introduce in Butler or Chantry type cage.
4. Put the Queen into a matchbox and some workers in a second matchbox for 10 minutes.
Put the Queen in with the workers and introduce directly after 10 minutes or introduce in the matchbox.
5. (Snelgrove) Introduce Queen into matchbox.
Fill with tepid water, shake and introduce Queen under a quilt.
6. a) Put two frames of Allow Queen to swim in a honey jar of honey and water solution.
young brood above the Queen excluder. Bees will come up to cover them,
b) Remove to new site and after an hour,
c) Introduce Queen in Butler cage.
7. Throw bees in front of hive onto a hiving board.
Drop the Queen on the bees as they walk in.
This is a very good method for introducing virgin Queens especially when the hive has laying workers.

Process if Queen cells are found during routine inspection



- Notes:
- 1) N.B. if a single Queen cell is found on the face of the brood - this is supersedure and may be left alone.
 - 2) If cells are emerging shake bees into the hive & pull ends off all Queen cells, releasing Queens into the hive - then leave for three weeks.
 - 3) Nucleus may be re-united over paper during main flow without looking for Queens.

The Modified Snelgrove Method Of Management

Advantages:-

No swarms, Re-queen automatic,

No seven day inspections, No winter feeding.

1st Week in May

1st Day

1. Put spare box on Snelgrove board with front upper entrance open.
2. Put all bees & brood onto this box except for comb with Queen and one other.
These are left in box on floor board.
3. Make up box with foundation and empty combs.
4. Put on Queen excluder and 3 supers.
5. Put box with all brood and bees on top over Snelgrove board with front upper entrance open.

10 Days later

Shut upper entrance. Open front lower entrance. Open back upper entrance.

5 Weeks later

Take off top box and supers. Unite brood boxes.

Put on Queen excluder and supers. Add more supers as required.

Do this when main nectar flow starts and then no precautions are necessary.

Caution: after 14th day; do not look in top box until 30th day.

N.B. One or two nuclei may be removed from the top box on 12th day as long as there are sufficient Queen cells. No manual reduction of Queen cells is required.